

OYSTER PERPETUAL  
YACHT-MASTER II



ROLEX

## WEARING THE WATCH FOR THE FIRST TIME

Before being worn for the first time, or if it has stopped, a Rolex watch must be wound manually in order to function correctly and precisely. To wind the watch manually, unscrew the winding crown completely, then turn it several times clockwise. (Turning in the other direction has no effect.) A minimum of 25 turns is required for adequate partial winding. The watch will then be wound automatically as long as it is worn on the wrist. Carefully screw the crown back down against the case to ensure waterproofness.



The green seal accompanying your Rolex watch is a symbol of its status as a Superlative Chronometer. This exclusive designation attests that it has successfully undergone a series of specific final controls by Rolex in its own laboratories in addition to the official COSC certification of its movement. This unique testing of its chronometric precision, waterproofness, self-winding and reliability pushes back the boundaries of performance and makes Rolex a benchmark for excellence in mechanical watches. For further information, please visit [rolex.com](https://www.rolex.com).



---

## THE HEART OF THE YACHT-MASTER II MODEL

---

OYSTER PERPETUAL YACHT-MASTER II	4-5
RING COMMAND BEZEL	6-7

---

## USING YOUR WATCH

---

OVERVIEW	8-9
SETTING THE WATCH	10-23
EASYLINK COMFORT EXTENSION LINK	24-25

---

## ROLEX SERVICE

---

CARING FOR YOUR ROLEX	26-27
AFTER-SALES SERVICE	28-29
WORLDWIDE SERVICE NETWORK	30

---

## ROLEX.COM

---





ROLEX

OYSTER PERPETUAL  
PERPETUAL CHRONOMETER  
OFFICIALLY CERTIFIED

YACHT-MASTER II

## OYSTER PERPETUAL YACHT-MASTER II

The Oyster Perpetual Yacht-Master II is a unique regatta chronograph dedicated to both yachting enthusiasts and experienced sailors. It features a countdown function with a mechanical memory programmable from 1 to 10 minutes and which can be synchronized on the fly – a function that responds to the need for precise timing during the crucial starting sequence of a regatta.

Its 44 mm Oyster case, waterproof to a depth of 100 metres (330 feet) is a paragon of robustness. Its dial offers exceptional legibility thanks to the Chromalight hour markers and hands

filled with a luminescent material emitting a long-lasting blue glow when in darkness. Its Triplock winding crown, with a triple waterproofness system, is protected by a crown guard that is an integral part of the middle case. Its sapphire crystal is virtually scratchproof.

The Oyster Perpetual Yacht-Master II is equipped with a self-winding mechanical movement entirely manufactured by Rolex. The Oyster Perpetual Yacht-Master II features an Oyster bracelet with an Oysterlock safety clasp and the Easylink comfort extension link.



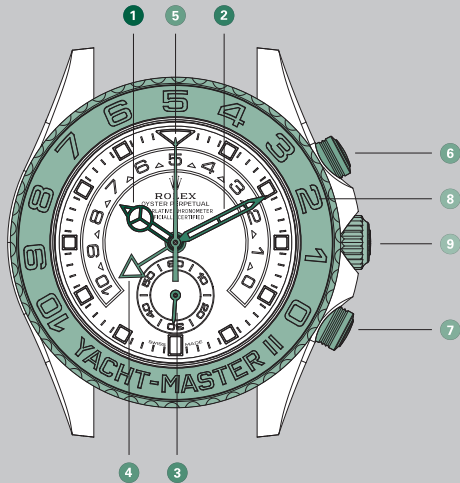
## RING COMMAND BEZEL

The Oyster Perpetual Yacht-Master II is equipped with a rotatable Ring Command bezel which serves to access and lock the countdown programming.

The unique interaction between the movement and the bezel allows the sophisticated functions of the countdown to be easily set and operated using just one hand.

## OVERVIEW

- 1 Hour hand
- 2 Minute hand
- 3 Small seconds hand
- 4 Countdown minute hand
- 5 Countdown seconds hand
- 6 Upper pusher
- 7 Lower pusher
- 8 Bidirectional 90° rotatable Ring Command bezel
- 9 Triplock winding crown with triple waterproofness system



## SETTING THE WATCH

### **Screwed-down position (*position 0*)**

The crown is completely screwed down against the case. When the crown is in this position, the Oyster Perpetual Yacht-Master II is guaranteed waterproof to a depth of 100 metres (330 feet).

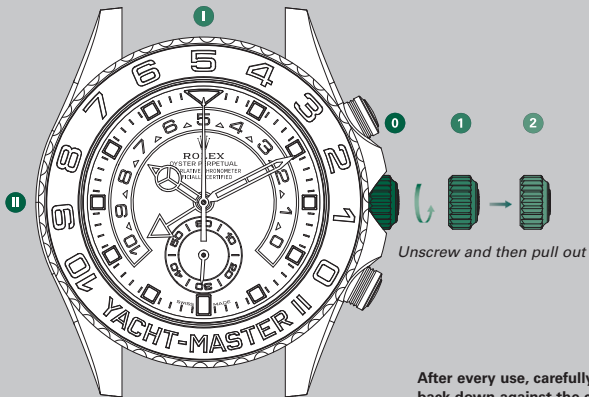
### **Manual winding (*position 1*)**

The crown is unscrewed. To wind the watch manually, turn the crown clockwise; turning in the other direction has no effect. When setting the watch for the first time or after the watch has stopped, complete a minimum of 25 turns for partial winding.

### **Setting the time (*position 2*)**

The crown is unscrewed and pulled out to the first notch. The small seconds hand is stopped, allowing you to set the time to the precise second. To set the hour and minute, turn the crown in either direction.

Before setting the watch, make sure the bezel is in *position 1*.



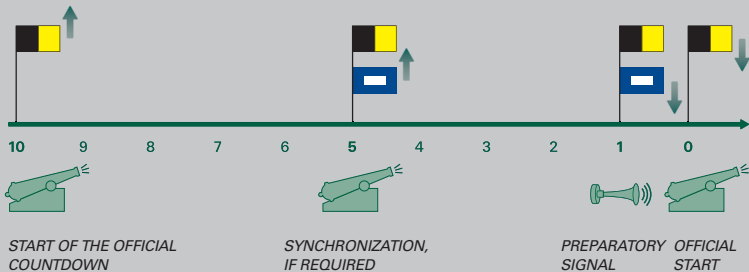
After every use, carefully screw the crown back down against the case to guarantee the waterproofness. Return the crown to *position 1* and apply light pressure on it while screwing it down clockwise against the case. The crown should never be unscrewed underwater.



## OFFICIAL REGATTA STARTING PROCEDURE

The official regatta starting procedure unfolds in several stages marked by sound and visual signals. It can last from 5 to 10 minutes according to the type of regatta.

The unique programming and on-the-fly synchronization functions of the Oyster Perpetual Yacht-Master II's countdown allow skippers to precisely time the starting sequence and be perfectly positioned to cross the line at the best possible moment.



*\* Overview of a 10-minute countdown sequence*

## USING THE OYSTER PERPETUAL YACHT-MASTER II

### 1. Programming the countdown (before a race)

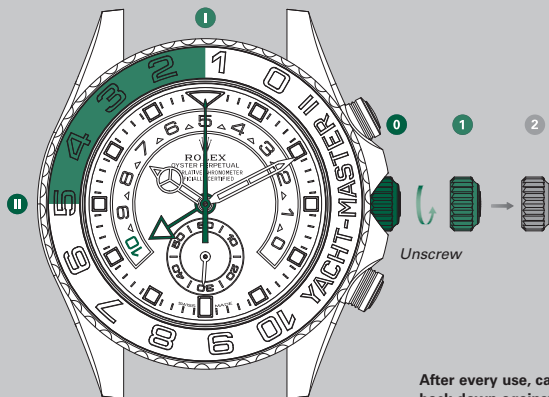
To programme the countdown, follow the steps in the order given:

- Ensure that the countdown seconds hand is stopped. If not, stop it by pressing the upper pusher.
- Put the bezel in *position II* by turning it counterclockwise as far as it will go. This blocks the upper pusher.
- Press the lower pusher until it remains depressed. The countdown seconds hand returns to 12 o'clock. The countdown minutes hand comes

back to the same minute programmed at the last setting.

- Unscrew the crown.
- Set the countdown duration by turning the crown clockwise. The countdown minute hand jumps from minute to minute. Stop at the desired countdown duration (10 minutes in this case).
- Put the bezel in *position I* by turning it clockwise as far as it will go. This unlocks the upper pusher and releases the lower pusher.
- Push in and then screw down the crown. The countdown is now programmed.

Go to step 2 ➡



Unscrew

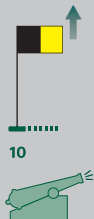
After every use, carefully screw the crown back down against the case to guarantee the waterproofness. Return the crown to *position 1* and apply light pressure on it while screwing it down clockwise against the case. The crown should never be unscrewed underwater.

## 2. Start of the official countdown

A starting gun and a flag signal the start of the official regatta countdown.

- Press the upper pusher to start the countdown. The countdown seconds hand starts instantly and indicates elapsed seconds. The countdown minute hand indicates the remaining minutes on the graduated 10 to 0 minute scale on the dial.

Go to step 3 →



### **3. Synchronization of the countdown with the official countdown**

A preparatory signal is given by firing the gun and hoisting another flag. If required, the Oyster Perpetual Yacht-Master II's countdown can be synchronized with the official countdown. This step is necessary if the watch countdown has been launched too early or too late in relation to the official timing.

- Press the lower pusher briefly and firmly at the sound of the gun to synchronize the countdown. The countdown seconds hand is reset on the fly and runs again instantaneously as soon as the pusher is released. At the same time, the countdown minute hand is automatically synchronized to the nearest minute to compensate for the countdown having been launched too early or too late.

Go to step 4 ➡





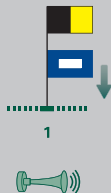
#### 4. Preparatory signal

Another preparatory signal is given with a blast of a horn and the lowering of the flag hoisted at the second gun.

- Make sure that the Oyster Perpetual Yacht-Master II's countdown is properly synchronized with the official countdown. If required, synchronize the countdown a second time (step 3).

The watch now indicates precisely to the second how much time remains before the start line can be crossed.

Go to step 5 →



## 5. Official start

The official start is marked by a final sound of the gun and the lowering of the last flag.

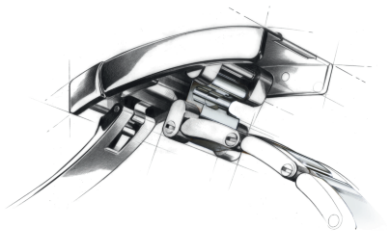
Having manoeuvred to full advantage until the last second, the skipper is perfectly positioned to cross the line at the signal and make the best start.

At the end of the countdown, the countdown minute hand stops at zero. The countdown seconds hand continues to run.

- Press the upper pusher to stop the countdown seconds hand.
- Press the lower pusher to reset the countdown. The countdown seconds hand returns to 12 o'clock. The countdown minute hand returns to the same minute programmed at the last setting (10 minutes in this example).

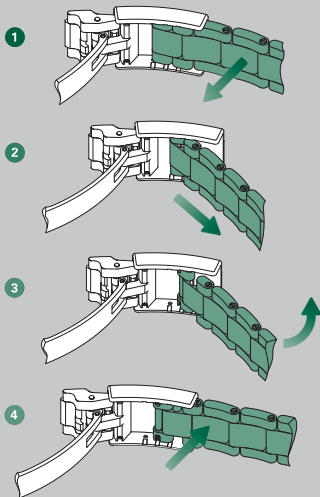


## EASYLINK COMFORT EXTENSION LINK

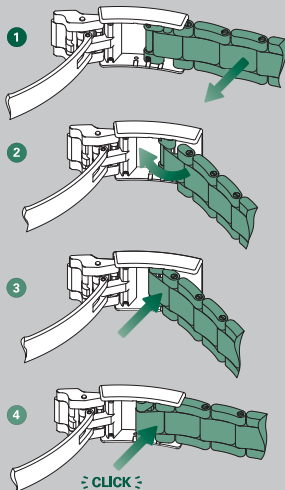


To ensure optimal comfort when wearing your watch in any circumstances, Rolex created the Easylink comfort extension link, which is available on some models. Its exclusive design, which was patented, allows the length of the bracelet to be adjusted by approximately 5 mm, without the use of tools.

## Adjusting from the short position to the long position



## Adjusting from the long position to the short position



## CARING FOR YOUR ROLEX

Thanks to Rolex expertise, your watch will require very little day-to-day care.

You can help preserve its lustre by cleaning it occasionally with a microfibre cloth. You can also wash the case and bracelet from time to time using soapy water and a soft brush. After wearing your watch in the sea, it is important to rinse it with fresh water to remove any salt and sand deposits.

Before cleaning your watch, always ensure that the crown is screwed down properly against the case to guarantee waterproofness.



## AFTER-SALES SERVICE

Rolex watch servicing ensures that your timepiece will continue to perform optimally and meet Rolex's stringent requirements in terms of precision, reliability and waterproofness throughout its life.

The timekeeping accuracy of your watch is largely dependent on high-performance lubricants specially developed by Rolex to minimize friction and prevent wear of components. To guarantee continued accuracy and waterproofness, Rolex recommends that you periodically return

your watch to an Official Rolex Retailer or Service Centre for professional servicing. When your watch is serviced by a Rolex watchmaker, the watch is completely dismantled and all of its components are cleaned. Each individual component is closely examined and those that no longer meet Rolex's functional and aesthetic specifications are replaced with genuine Rolex parts. The movement is carefully lubricated then tested to guarantee its timing accuracy; the case and the metal bracelet are meticulously refinished to restore

their lustre. Your Rolex then undergoes a series of rigorous technical tests and checks to guarantee its waterproofness, power reserve and precision.

After a complete Rolex service, your watch is covered by a service guarantee.

## WORLDWIDE SERVICE NETWORK

The network of Official Rolex Retailers and Service Centres covers more than 100 countries around the world and draws on the expertise of highly skilled watchmakers, carefully selected and trained by Rolex.

Official Rolex Retailers can advise you on all the technical aspects of your watch's functions. Whether your bracelet needs sizing or it is time for a complete service, highly qualified Rolex watchmakers are on hand worldwide to meet all of your service needs.

For a list of Official Rolex Retailers and Service Centres, please visit [rolex.com](https://www.rolex.com).

# ROLEX.COM

We invite you to visit **rolex.com**,  
a privileged place to learn more about  
the functions of your Rolex watch  
and about the quality, know-how and  
fundamental values of the brand.

Welcome to the world of Rolex.

Rolex reserves the right to modify the models illustrated in this publication at any time.

© Rolex SA, 3-5-7, rue François-Dussaud, 1211 Geneva 26, Switzerland  
668.42 Eng - 5.2020 - Printed in Switzerland

[rolex.com](https://www.rolex.com)

