

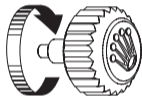
OYSTER PERPETUAL  
GMT-MASTER II



ROLEX

## WEARING THE WATCH FOR THE FIRST TIME

Before being worn for the first time, or if it has stopped, a Rolex watch must be wound manually in order to function correctly and precisely. To wind the watch manually, unscrew the winding crown completely, then turn it several times clockwise. (Turning in the other direction has no effect.) A minimum of 25 turns is required for adequate partial winding. The watch will then be wound automatically as long as it is worn on the wrist. Carefully screw the crown back down against the case to ensure waterproofness.



The green seal accompanying your Rolex watch is a symbol of its status as a Superlative Chronometer. This exclusive designation attests that it has successfully undergone a series of specific final controls by Rolex in its own laboratories in addition to the official COSC certification of its movement. This unique testing of its chronometric precision, waterproofness, self-winding and reliability pushes back the boundaries of performance and makes Rolex a benchmark for excellence in mechanical watches. For further information, please visit [rolex.com](https://www.rolex.com).



---

## THE HEART OF THE GMT-MASTER II MODEL

---

OYSTER PERPETUAL GMT-MASTER II	4-5
SIMULTANEOUS DUAL TIME ZONE AND ALTERNATIVE TIME ZONE	6-7

---

## USING YOUR WATCH

---

OVERVIEW	8-9
SETTING THE WATCH	10-19
EASYLINK COMFORT EXTENSION LINK	20-21

---

## ROLEX SERVICE

---

CARING FOR YOUR ROLEX	22-23
AFTER-SALES SERVICE	24-25
WORLDWIDE SERVICE NETWORK	26

---

## ROLEX.COM

---



**ROLEX**

PERPETUAL DATE



**GMT-MASTER II**

SUPERLATIVE CHRONOMETER

OFFICIALLY CERTIFIED

## OYSTER PERPETUAL GMT-MASTER II

Precise, reliable and functional, the Oyster Perpetual GMT-Master II was designed to allow the time in two different time zones to be read simultaneously: either the local time and reference time, or the local time and the time in an alternative time zone. It features a 24-hour hand and a bidirectional rotatable bezel with a 24-hour graduated bezel insert. Its 40 mm case, waterproof to a depth of 100 metres (330 feet) is a paragon of robustness. Its dial offers exceptional legibility thanks to the Chromalight hour markers and hands filled with a luminescent material emitting a long-lasting blue glow when

in darkness. Its Triplock winding crown, with a triple waterproofness system, is protected by a crown guard that is an integral part of the middle case. The sapphire crystal, with a Cyclops lens at 3 o'clock, is virtually scratchproof.

The Oyster Perpetual GMT-Master II is equipped with a self-winding mechanical movement entirely manufactured by Rolex.

The Oyster Perpetual GMT-Master II features an Oyster or Jubilee bracelet with an Oysterlock safety clasp and the Easylink comfort extension link.

## SIMULTANEOUS DUAL TIME ZONE AND ALTERNATIVE TIME ZONE



The Oyster Perpetual GMT-Master II allows travellers to simultaneously read their local time and reference (home) time. The former is indicated by the conventional hour, minute and seconds hands. The latter is indicated by the triangle-tipped 24-hour hand read against the graduations on the bezel when it is in the neutral position (triangle at 12 o'clock).

Local time can be adjusted quickly by jumps of the hour hand without affecting either the 24-hour hand or the minute hand. The date change is linked to the

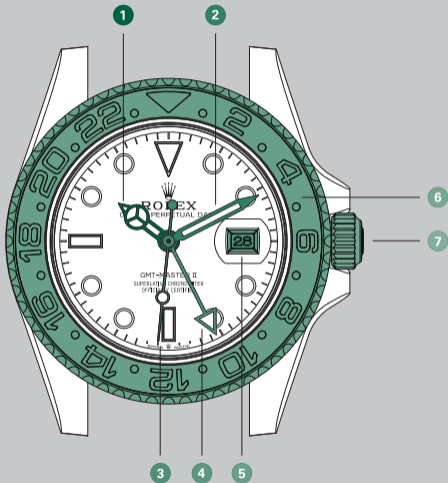
local time. Thus, the date shown in the window always corresponds to that of the local time.

Turning the bidirectional bezel of the GMT-Master II allows the time in an alternative time zone to be displayed (see p. 18). In this case, the reference time is no longer shown.



## OVERVIEW

- 1 Hour hand
- 2 Minute hand
- 3 Seconds hand
- 4 24-hour hand
- 5 Date window
- 6 Bidirectional rotatable bezel with 24-hour graduated Cerachrom insert in ceramic
- 7 Triplock winding crown with triple waterproofness system



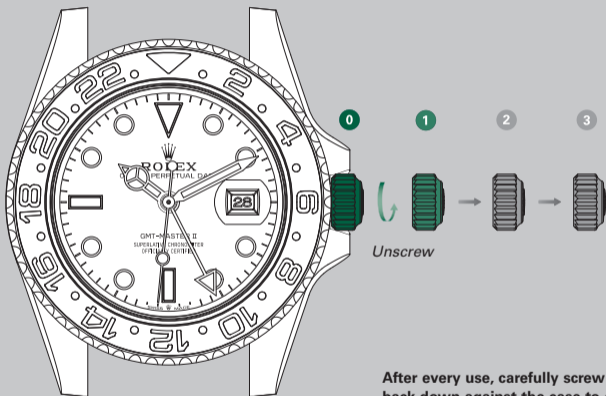
## SETTING THE WATCH

### **Screwed-down position (*position 0*)**

The crown is completely screwed down against the case. When the crown is in this position, the Oyster Perpetual GMT-Master II is guaranteed waterproof to a depth of 100 metres (330 feet).

### **Manual winding (*position 1*)**

The crown is unscrewed. To wind the watch manually, turn the crown clockwise. (Turning in the other direction has no effect.) When setting the watch for the first time or after the watch has stopped, complete a minimum of 25 turns for partial winding.



After every use, carefully screw the crown back down against the case to guarantee the waterproofness. Return the crown to *position 1* and apply light pressure on it while screwing it down clockwise against the case. The crown should never be unscrewed underwater.

## COMPLETE SETTING OF THE WATCH IS CARRIED OUT IN TWO STEPS IN THE ORDER GIVEN BELOW

### 1. Setting the reference time (crown in *position 3*)

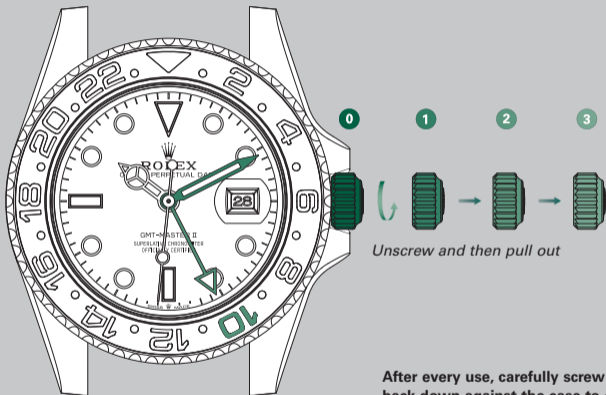
To set the reference time, follow the steps in the order given:

- Unscrew the crown and then pull it out to the second notch. The seconds hand is stopped, allowing you to set the time to the precise second.
- Put the bezel in the neutral position (triangle on the bezel aligned with the 12 o'clock marker on the dial).

- Set the reference time using the 24-hour hand (against the graduations on the bezel) and the minute hand (against the graduations on the dial) by turning the crown in either direction.

Setting the reference time also moves the conventional hour hand (local time). For this reason, the reference time must be set before setting the local time.

Go to step 2 →



\* Reference time, Geneva, 10.10 a.m.

After every use, carefully screw the crown back down against the case to guarantee the waterproofness. Return the crown to *position 1* and apply light pressure on it while screwing it down clockwise against the case. The crown should never be unscrewed underwater.

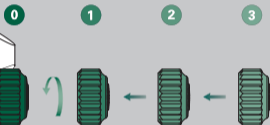
## 2. Setting the date and the local time (crown in *position 2*)

To set the date and the local time, follow the steps in the order given:

- Pull the crown out to the first notch.
- Set the date by turning the crown in either direction. The hour hand moves in increments of one hour. The date changes when the hour hand passes midnight, in either direction, after two complete turns around the dial.

- Set the local time by turning the crown in either direction. The hour hand moves in increments of one hour. Be aware of the difference between noon and midnight (the date changes as the hour hand passes midnight).
- Push in and then screw down the crown.

The local time is identical to the reference time (24-hour hand) if the wearer is currently located in his reference zone. It can be easily adjusted when travelling.



Push in and then screw down

\* Reference time, Geneva, 10.10 a.m.

\* Local time, Geneva, 10.10 a.m.

After every use, carefully screw the crown back down against the case to guarantee the waterproofness. Return the crown to *position 1* and apply light pressure on it while screwing it down clockwise against the case. The crown should never be unscrewed underwater.



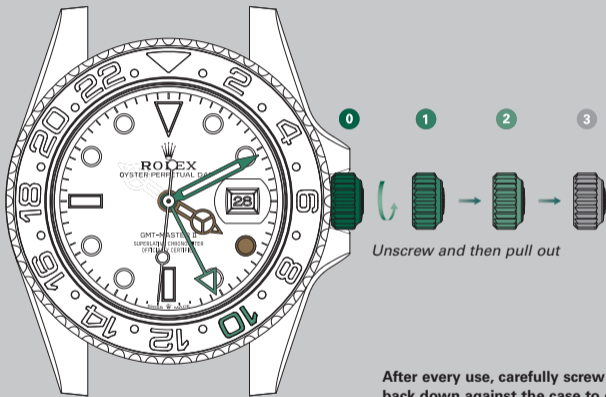
## ADJUSTING THE LOCAL TIME (crown in *position 2*)

When travelling, to adjust local time only (without affecting the 24-hour reference time display), follow the steps in the order given:

- Unscrew the crown and then pull it out to the first notch.
- Set the local time by turning the crown in either direction. The hour hand moves in increments of one hour. The date is linked to local time and changes automatically when the hour hand passes midnight.

- Push in and then screw down the crown.

The 24-hour hand indicates the time in the reference time zone and allows the wearer to distinguish daytime hours from night-time hours.



\* Reference time, Geneva, 10.10 a.m.

\* Local time, New York, 4.10 a.m.

After every use, carefully screw the crown back down against the case to guarantee the waterproofness. Return the crown to *position 1* and apply light pressure on it while screwing it down clockwise against the case. The crown should never be unscrewed underwater.

## DISPLAYING AN ALTERNATIVE TIME ZONE (setting via the bezel only)

An alternative time zone can be displayed by using the rotatable bezel and the 24-hour hand (which usually displays the reference time).

To display the alternative time zone, place the bezel in the neutral position (triangle at 12 o'clock). Then calculate the number of hours' difference between the reference time and the time in the desired time zone. If that time zone is ahead (east of the reference time), turn the bezel counterclockwise the same number of hours. If the desired time zone is behind (west of the reference time), turn the bezel clockwise the same number of hours. The 24-hour hand read

against the bezel indicates the time in the alternative time zone. The minutes are shown on the dial by the centre minute hand.

### *Example*

*To show Tokyo time (+8 hr compared to Geneva reference time), turn the bezel 8 notches counterclockwise.*

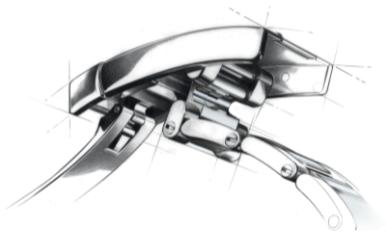
To return to the reference time display, turn the bezel in either direction to place the triangle on the bezel opposite the 12 o'clock marker on the dial (neutral position).



*\* Local time, New York, 4.10 a.m.*

*\* Time in the alternative time zone, Tokyo, 6.10 p.m.*

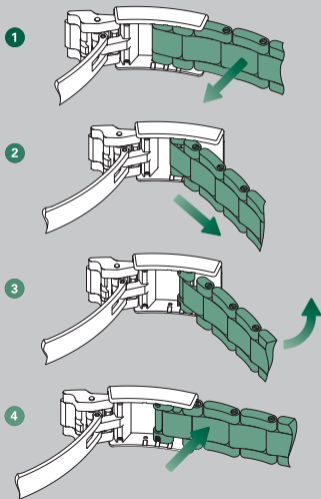
## EASYLINK COMFORT EXTENSION LINK\*



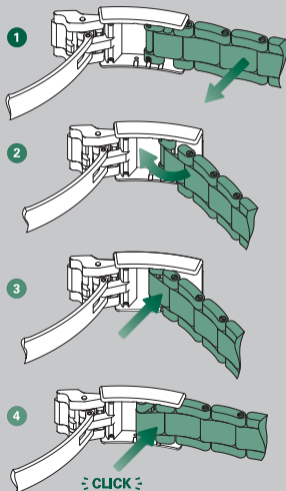
To ensure optimal comfort when wearing your watch in any circumstances, Rolex created the Easylink comfort extension link, which is available on some models. Its exclusive design, which was patented, allows the length of the bracelet to be adjusted by approximately 5 mm, without the use of tools.

*\*available on Oyster and Jubilee bracelets*

## Adjusting from the short position to the long position



## Adjusting from the long position to the short position



## CARING FOR YOUR ROLEX

Thanks to Rolex expertise, your watch will require very little day-to-day care.

You can help preserve its lustre by cleaning it occasionally with a microfibre cloth. You can also wash the case and bracelet from time to time using soapy water and a soft brush. After wearing your watch in the sea, it is important to rinse it with fresh water to remove any salt and sand deposits.

Before cleaning your watch, always ensure that the crown is screwed down properly against the case to guarantee waterproofness.



## AFTER-SALES SERVICE

Rolex watch servicing ensures that your timepiece will continue to perform optimally and meet Rolex's stringent requirements in terms of precision, reliability and waterproofness throughout its life.

The timekeeping accuracy of your watch is largely dependent on high-performance lubricants specially developed by Rolex to minimize friction and prevent wear of components. To guarantee continued accuracy and waterproofness, Rolex recommends that you periodically return

your watch to an Official Rolex Retailer or Service Centre for professional servicing. When your watch is serviced by a Rolex watchmaker, the watch is completely dismantled and all of its components are cleaned. Each individual component is closely examined and those that no longer meet Rolex's functional and aesthetic specifications are replaced with genuine Rolex parts. The movement is carefully lubricated then tested to guarantee its timing accuracy; the case and the metal bracelet are meticulously refinished to restore

their lustre. Your Rolex then undergoes a series of rigorous technical tests and checks to guarantee its waterproofness, power reserve and precision.

After a complete Rolex service, your watch is covered by a service guarantee.

## WORLDWIDE SERVICE NETWORK

The network of Official Rolex Retailers and Service Centres covers more than 100 countries around the world and draws on the expertise of highly skilled watchmakers, carefully selected and trained by Rolex.

Official Rolex Retailers can advise you on all the technical aspects of your watch's functions. Whether your bracelet needs sizing or it is time for a complete service, highly qualified Rolex watchmakers are on hand worldwide to meet all of your service needs.

For a list of Official Rolex Retailers and Service Centres, please visit [rolex.com](https://www.rolex.com).

# ROLEX.COM

We invite you to visit **rolex.com**,  
a privileged place to learn more about  
the functions of your Rolex watch  
and about the quality, know-how and  
fundamental values of the brand.

Welcome to the world of Rolex.

Rolex reserves the right to modify the models illustrated in this publication at any time.

© Rolex SA, 3-5-7, rue François-Dussaud, 1211 Geneva 26, Switzerland  
IMR-GMT-EN-18 - 2.2020 - Printed in Switzerland

[rolex.com](https://www.rolex.com)

