

OYSTER PERPETUAL
EXPLORER



ROLEX

WEARING THE WATCH FOR THE FIRST TIME

Before being worn for the first time, or if it has stopped, a Rolex watch must be wound manually in order to function correctly and precisely. To wind the watch manually, unscrew the winding crown completely, then turn it several times clockwise. (Turning in the other direction has no effect.) A minimum of 25 turns is required for adequate partial winding. The watch will then be wound automatically as long as it is worn on the wrist. Carefully screw the crown back down against the case to ensure waterproofness.



The green seal accompanying your Rolex watch is a symbol of its status as a Superlative Chronometer. This exclusive designation attests that it has successfully undergone a series of specific final controls by Rolex in its own laboratories in addition to the official COSC certification of its movement. This unique testing of its chronometric precision, waterproofness, self-winding and reliability pushes back the boundaries of performance and makes Rolex a benchmark for excellence in mechanical watches. For further information, please visit [rolex.com](https://www.rolex.com).



THE HEART OF THE EXPLORER MODELS

OYSTER PERPETUAL EXPLORER	4-7
---------------------------	-----

USING YOUR WATCH

OVERVIEW	8-9
SETTING THE WATCH	10-11
EASYLINK COMFORT EXTENSION LINK	12-13

ROLEX SERVICE

CARING FOR YOUR ROLEX	14-15
AFTER-SALES SERVICE	16-17
WORLDWIDE SERVICE NETWORK	18

ROLEX.COM

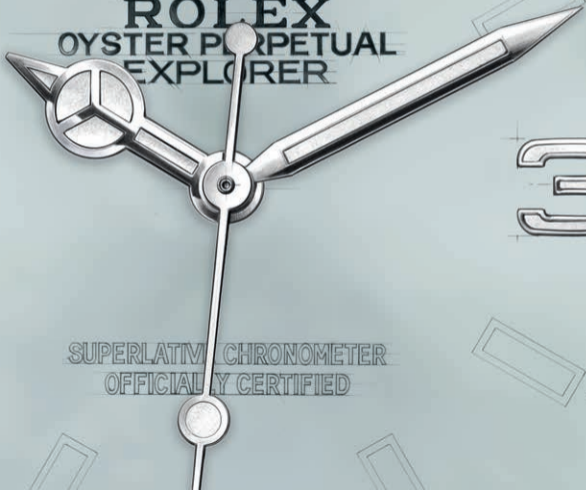


ROLEX
OYSTER PERPETUAL
EXPLORER

9

3

SUPERLATIVE CHRONOMETER
OFFICIALLY CERTIFIED



OYSTER PERPETUAL EXPLORER

In the 1930s, Rolex began using the world as a laboratory to test the reliability of its watches under real conditions. This pioneering spirit prompted the company to equip numerous Himalayan expeditions with Oyster watches.

On 29 May 1953, Sir Edmund Hillary and Tenzing Norgay were the first to reach the summit of Mount Everest. The two men were members of a British expedition that was equipped with Oyster Perpetual watches.

Launched in 1953 in the wake of the successful ascent of the world's highest mountain, the Oyster Perpetual Explorer soon became an icon.

The Explorer is emblematic of the close ties between Rolex and exploration.

The case of the Oyster Perpetual Explorer, guaranteed waterproof to a depth of 100 meters (330 feet), is a paragon of robustness and reliability. The sapphire crystal is virtually scratchproof and benefits from an anti-reflective coating. The dial offers exceptional legibility thanks to its Chromalight hour markers and hands filled with a luminescent material emitting a long-lasting blue glow when in darkness.

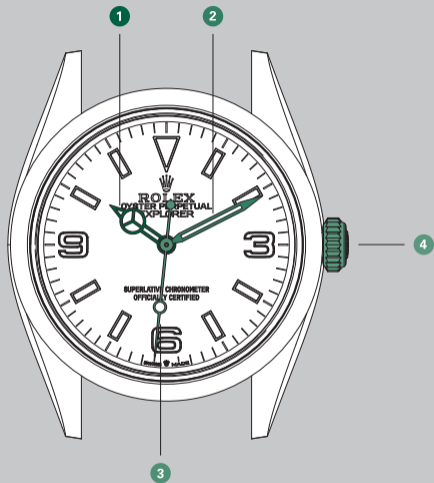
The Oyster Perpetual Explorer is equipped with a self-winding mechanical movement entirely manufactured by Rolex.

The Oyster Perpetual Explorer features an Oyster bracelet with an Oysterlock safety clasp and the Easylink comfort extension link.



OVERVIEW

- 1 Hour hand
- 2 Minute hand
- 3 Seconds hand
- 4 Twinlock winding crown with double waterproofness system



SETTING THE WATCH

Screwed-down position (*position 0*)

The crown is completely screwed down against the case. When the crown is in this position, the Oyster Perpetual Explorer is guaranteed waterproof to a depth of 100 meters (330 feet).

Manual winding (*position 1*)

The crown is unscrewed. To wind the watch manually, turn the crown clockwise; turning in the other direction has no effect. When setting the watch for the first time or after the watch has stopped, complete a minimum of 25 turns for partial winding.

Setting the time (*position 2*)

The crown is unscrewed and pulled out to the first notch. The seconds hand is stopped, allowing you to set the time to the precise second. To set the hour and minute, turn the crown in either direction.



Initial winding and setting

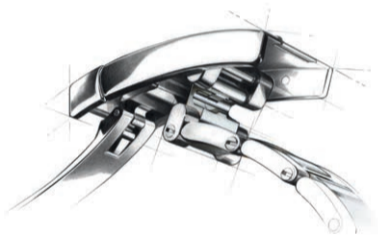
- A. Wind the watch manually (*position 1*).
- B. Set the time (*position 2*).



Unscrew and then pull out

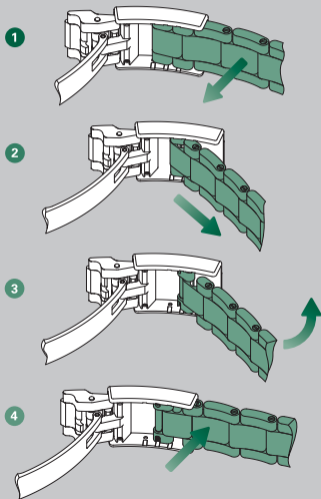
After every use, carefully screw the crown back down against the case to guarantee the waterproofness. Return the crown to *position 1* and apply light pressure on it while screwing it down clockwise against the case. The crown should never be unscrewed underwater.

EASYLINK COMFORT EXTENSION LINK

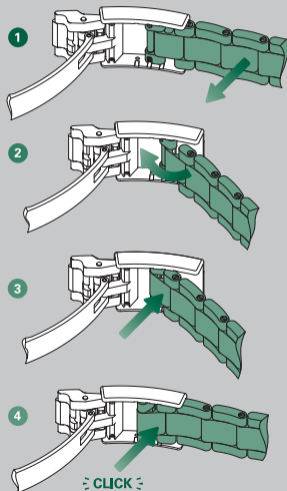


To ensure optimal comfort when wearing your watch, Rolex created the Easylink comfort extension link. This exclusive system comprises a link that is pulled out or folded back on itself to adjust the length of the bracelet by approximately 5 mm, without the need for tools.

Adjusting from the short position to the long position



Adjusting from the long position to the short position



CARING FOR YOUR ROLEX

Thanks to Rolex expertise, your watch will require very little day-to-day care.

You can help preserve its luster by cleaning it occasionally with a microfiber cloth. You can also wash the case and bracelet from time to time using soapy water and a soft brush. After wearing your watch in the sea, it is important to rinse it with fresh water to remove any salt and sand deposits.

Before cleaning your watch, always ensure that the crown is screwed down properly against the case to guarantee waterproofness.

AFTER-SALES SERVICE

Rolex after-sales servicing ensures that your timepiece will continue to perform optimally in terms of precision, reliability and waterproofness, and also retain its particular luster.

The proper functioning and timekeeping accuracy of your Rolex watch movement is dependent on high-performance lubricants specially developed by the brand. Over time, the properties of all lubricants will degrade, which can affect a movement's precision.

Additionally, to verify the waterproofness of your watch, it is important to carry out stringent technical checks.

Rolex therefore recommends that you periodically return your watch to one of its Official Rolex Jewelers or Service Centers for complete servicing, which is always performed by a Rolex-approved watchmaker.

During a complete service, the watch is dismantled and all of its components – the case, bracelet and movement – are closely examined.

The movement is entirely disassembled and all the parts are carefully inspected. Those that no longer meet Rolex requirements are systematically replaced by new components. The movement is lubricated on reassembly. The case and bracelet are re-polished or satin-finished according to their original finish, restoring their shine and luster while removing any marks or scratches.

At the end of the process, your Rolex watch undergoes a series of tests to verify its functions, waterproofness and power reserve, as well as the precision of its movement.

After a complete Rolex service, your watch is covered by a service warranty.

WORLDWIDE SERVICE NETWORK

The network of Official Rolex Jewelers and Service Centers covers more than 100 countries around the world and draws on the expertise of highly skilled watchmakers, carefully selected and trained by Rolex.

Official Rolex Jewelers can advise you on all the technical aspects of your watch's functions. Whether your bracelet needs sizing or it is time for a complete service, highly qualified Rolex watchmakers are on hand worldwide to meet all of your service needs.

For a list of Official Rolex Jewelers and Service Centers, please visit [rolex.com](https://www.rolex.com).


ROLEX.COM

We invite you to visit **rolex.com**,
a privileged place to learn more about
the functions of your Rolex watch
and about the quality, know-how and
fundamental values of the brand.

Welcome to the world of Rolex.

© Trademarks:



ROLEX, , OYSTER, AIR-KING, CERACHROM, CHROMALIGHT, CHRONERGY, COSMOGRAPH, CROWNCLASP, CYCLOPS, DATEJUST, DAY-DATE, DAYTONA, DEEPSEA, DEEPSEA CHALLENGE, EASYLINK, EVEROSE, EXPLORER, EXPLORER II, GMT-MASTER, GMT-MASTER II, JUBILEE, MICROSTELLA, MILGAUSS, OYSTERCLASP, OYSTERFLEX, OYSTERLOCK, OYSTER PERPETUAL, OYSTERSTEEL, PARACHROM, PARAFLEX, PEARLMASTER, PERPETUAL, PRESIDENT, RINGLOCK, RLX, ROLESIUM, ROLESOR, ROLEX GLIDELock, SAROS, SEA-DWELLER, SKY-DWELLER, SUBMARINER, SUNDUST, SYLOXI, TRIPLOCK, TWINLOCK, YACHT-MASTER. CELLINI.

Rolex reserves the right to modify the models illustrated in this publication at any time.

© Rolex Watch USA, Inc., Rolex Building, 665 Fifth Avenue, New York, NY 10022
IMR-EX-US-21 - 4.2023 - Printed in Switzerland

[rolex.com](https://www.rolex.com)

