

OYSTER PERPETUAL  
EXPLORER II



ROLEX

## WEARING THE WATCH FOR THE FIRST TIME

Before being worn for the first time, or if it has stopped, a Rolex watch must be wound manually in order to function correctly and precisely. To wind the watch manually, unscrew the winding crown completely, then turn it several times clockwise. (Turning in the other direction has no effect.) A minimum of 25 turns is required for adequate partial winding. The watch will then be wound automatically as long as it is worn on the wrist. Carefully screw the crown back down against the case to ensure waterproofness.



The green seal accompanying your Rolex watch is a symbol of its status as a Superlative Chronometer. This exclusive designation attests that it has successfully undergone a series of specific final controls by Rolex in its own laboratories in addition to the official COSC certification of its movement. This unique testing of its chronometric precision, waterproofness, self-winding and reliability pushes back the boundaries of performance and makes Rolex a benchmark for excellence in mechanical watches. For further information, please visit [rolex.com](https://www.rolex.com).



---

## THE HEART OF THE EXPLORER II MODEL

---

OYSTER PERPETUAL EXPLORER II	4-5
DISTINCTION BETWEEN DAY AND NIGHT OR SECOND TIME ZONE	6-7

---

## USING YOUR WATCH

---

OVERVIEW	8-9
SETTING THE WATCH	10-21
EASYLINK COMFORT EXTENSION LINK	22-23

---

## ROLEX SERVICE

---

CARING FOR YOUR ROLEX	24-25
AFTER-SALES SERVICE	26-27
WORLDWIDE SERVICE NETWORK	28

---

## ROLEX.COM

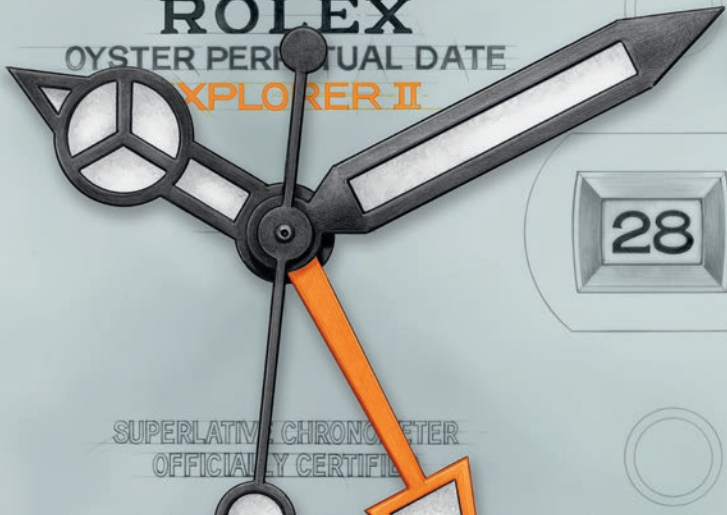
---



**ROLEX**

OYSTER PERPETUAL DATE

**EXPLORER II**



SUPERLATIVE CHRONOMETER  
OFFICIALLY CERTIFIED

## OYSTER PERPETUAL EXPLORER II

The Oyster Perpetual Explorer II is the watch of choice for explorers. Thanks to a 24-hour display by means of an additional hand and a graduated fixed bezel, the watch allows the wearer to distinguish daytime from night-time hours or to read the time in a second time zone. Its 42mm case, waterproof to a depth of 100 meters (330 feet), is a paragon of robustness. The easy-to-read dial features Chromalight hour markers and hands, which are filled with a luminescent material emitting a long-lasting blue glow when in darkness. Its winding crown is protected

by a crown guard that is an integral part of the middle case. The sapphire crystal, with a Cyclops lens at 3 o'clock, is virtually scratchproof.

The Oyster Perpetual Explorer II is equipped with a self-winding mechanical movement entirely manufactured by Rolex.

The Oyster Perpetual Explorer II features an Oyster bracelet with an Oysterlock safety clasp and the Easylink comfort extension link.

## DISTINCTION BETWEEN DAY AND NIGHT OR SECOND TIME ZONE

The Explorer II's additional, 24-hour hand circles the dial once every 24 hours and is used in combination with the graduated fixed bezel. Orange and arrow-shaped, it enables the wearer to either see the time in 24-hour format – which is particularly useful in areas where it is difficult to distinguish between day and night, such as underground or in polar regions – or to read the time in a second time zone.

When the Explorer II shows the time in 24-hour format, the 24-hour hand points to the graduated bezel, allowing the wearer to clearly distinguish daytime from night-time, while the conventional hands indicate the hours and minutes.

If the Explorer II displays the time in two time zones simultaneously, the reference time is indicated on the graduated bezel by the 24-hour hand. Local time is shown by the conventional hour and minute hands.

In both cases, the minutes are always displayed by the conventional minute hand.



## OVERVIEW

- 1 Hour hand
- 2 Minute hand
- 3 Seconds hand
- 4 24-hour hand
- 5 Date window
- 6 24-hour graduated fixed bezel
- 7 Twinlock winding crown with double waterproofness system



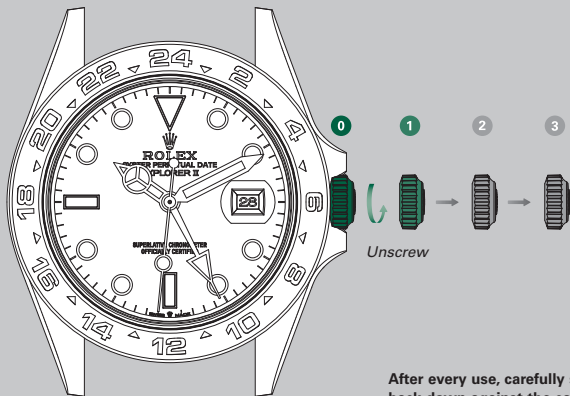
## SETTING THE WATCH

### **Screwed-down position (*position 0*)**

The crown is completely screwed down against the case. When the crown is in this position, the Oyster Perpetual Explorer II is guaranteed waterproof to a depth of 100 meters (330 feet).

### **Manual winding (*position 1*)**

The crown is unscrewed. To wind the watch manually, turn the crown clockwise; turning in the other direction has no effect. When setting the watch for the first time or after the watch has stopped, complete a minimum of 25 turns for partial winding.



After every use, carefully screw the crown back down against the case to guarantee the waterproofness. Return the crown to *position 1* and apply light pressure on it while screwing it down clockwise against the case. The crown should never be unscrewed underwater.

## TIME WITH DISTINCTION BETWEEN DAY AND NIGHT

### 1. Setting the 24-hour hand (crown in *position 3*)

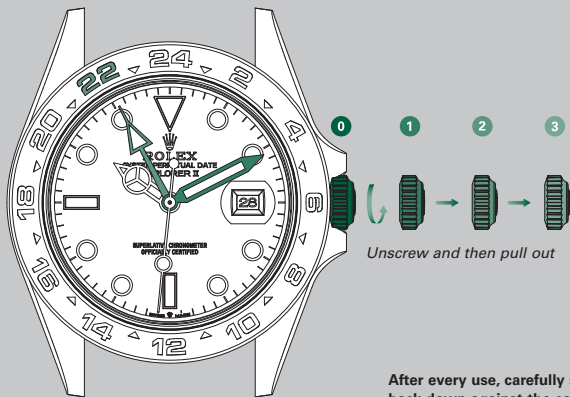
To set the 24-hour hand, follow the steps in the order given:

- Unscrew the crown and then pull it out to the second notch. The seconds hand is stopped, allowing you to set the time to the precise second.

- Set the 24-hour hand (against the 24-hour graduated bezel) and the minute hand (against the dial) by turning the crown in either direction.

Setting the 24-hour hand also moves the conventional hour hand. This hour hand must, therefore, be set separately (see step 2).

Go to step 2 →



\* Time in 24-hour format (distinction between day and night): 22:10

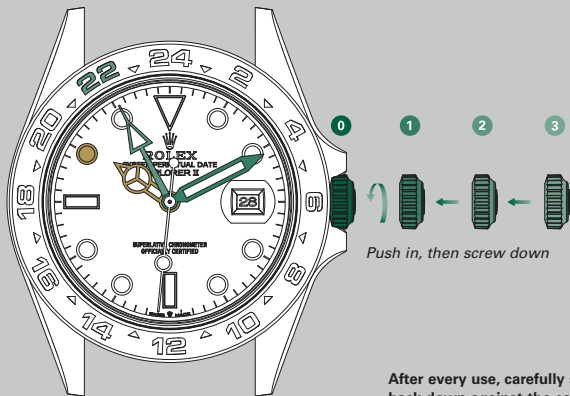
Unscrew and then pull out

After every use, carefully screw the crown back down against the case to guarantee the waterproofness. Return the crown to *position 1* and apply light pressure on it while screwing it down clockwise against the case. The crown should never be unscrewed underwater.

## 2. Setting the date and the hour hand (crown in *position 2*)

To set the date and the hour hand, follow the steps in the order given:

- Pull out the crown to the first notch.
- Set the date by turning the crown in either direction. The hour hand moves in increments of one hour. The date changes when the hour hand passes midnight, in either direction, after two full turns around the dial.
- Set the hour hand by turning the crown in either direction. The hour hand moves in increments of one hour. Be aware of the difference between noon and midnight (the date changes as the hour hand passes midnight).
- Push in and then screw down the crown.



\* Time via conventional hands: 10.10 am  
Time in 24-hour format (distinction  
between day and night): 22:10

Push in, then screw down

After every use, carefully screw the crown back down against the case to guarantee the waterproofness. Return the crown to *position 1* and apply light pressure on it while screwing it down clockwise against the case. The crown should never be unscrewed underwater.



## DUAL TIME ZONE FUNCTION

### 1. Setting the reference time (crown in *position 3*)

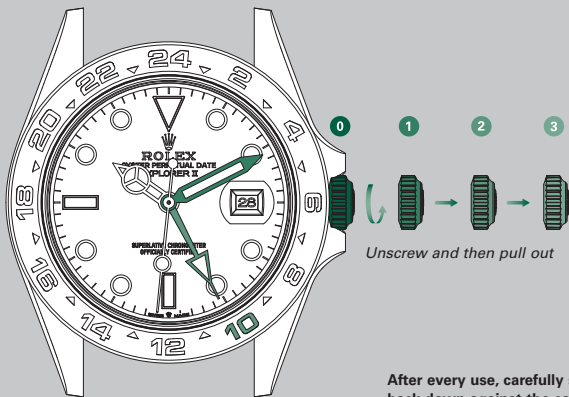
To set the reference time, follow the steps in the order given:

- Unscrew the crown and then pull it out to the second notch. The seconds hand is stopped, allowing you to set the time to the precise second.

- Set the reference time using the 24-hour hand (against the graduations on the bezel) and the minute hand (against the graduations on the dial) by turning the crown in either direction.

Setting the reference time also moves the conventional hour hand (local time). For this reason, the reference time must be set before setting the local time (see step 2).

Go to step 2 →



Unscrew and then pull out

\* Reference time (Geneva) in 24-hour format: 10:10

After every use, carefully screw the crown back down against the case to guarantee the waterproofness. Return the crown to *position 1* and apply light pressure on it while screwing it down clockwise against the case. The crown should never be unscrewed underwater.

## 2. Setting the date and the local time (crown in *position 2*)

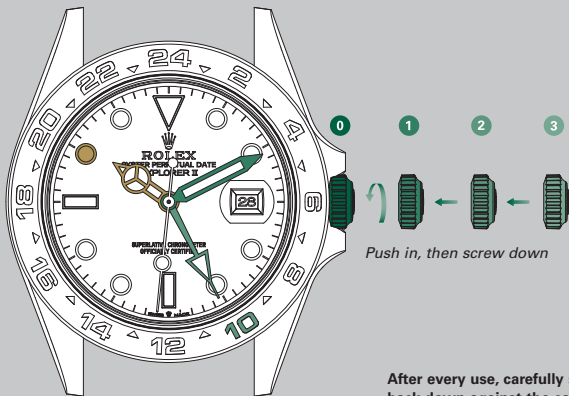
To set the date and the local time, follow the steps in the order given:

- Pull out the crown to the first notch.
- Set the date by turning the crown in either direction. The hour hand moves in increments of one hour. The date changes when the hour hand passes midnight, in either direction, after two full turns around the dial.

- Set the local time by turning the crown in either direction. The hour hand moves in increments of one hour. Be aware of the difference between noon and midnight (the date changes as the hour hand passes midnight).
- Push in and then screw down the crown.

The local time is identical to the reference time (24-hour hand) when the wearer is located in their reference zone. It can be easily adjusted when traveling.

See page 20 →



\* Local time (Geneva)  
via conventional hands: 10.10 am  
Reference time (Geneva) in 24-hour format: 10:10

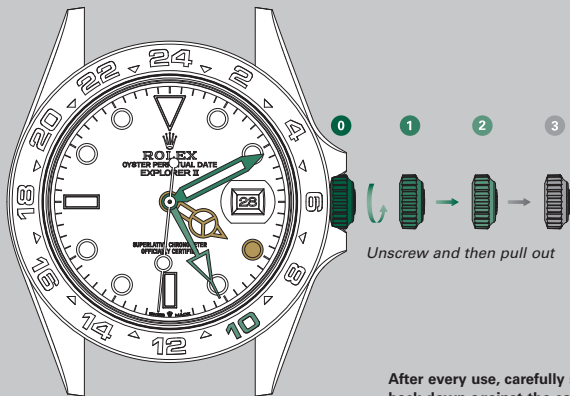
Push in, then screw down

After every use, carefully screw the crown back down against the case to guarantee the waterproofness. Return the crown to *position 1* and apply light pressure on it while screwing it down clockwise against the case. The crown should never be unscrewed underwater.

### **Adjusting the local time (crown in *position 2*)**

To adjust the local time only (without affecting the 24-hour reference time display), follow the steps in the order given:

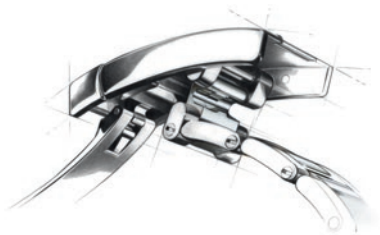
- Unscrew the crown and then pull it out to the first notch.
- Set the local time by turning the crown in either direction. The hour hand moves in increments of one hour. The date is linked to local time and changes automatically when the hour hand passes midnight.
- Push in and then screw down the crown.



\* Local time (New York)  
via conventional hands: 4.10 am  
Reference time (Geneva) in 24-hour format: 10:10

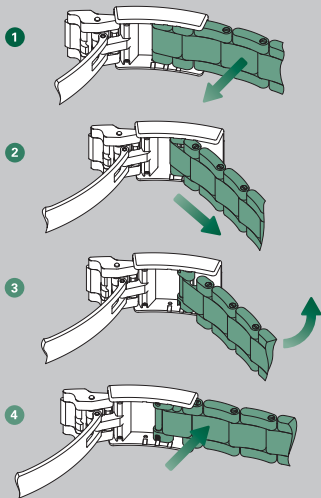
After every use, carefully screw the crown back down against the case to guarantee the waterproofness. Return the crown to *position 1* and apply light pressure on it while screwing it down clockwise against the case. The crown should never be unscrewed underwater.

## EASYLINK COMFORT EXTENSION LINK

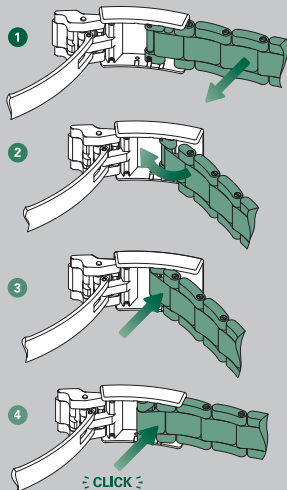


To ensure optimal comfort when wearing your watch, Rolex created the Easylink comfort extension link. Its exclusive design comprises a link that is pulled out or folded back on itself to adjust the length of the bracelet by approximately 5 mm, without the need for tools.

## Adjusting from the short position to the long position



## Adjusting from the long position to the short position





## CARING FOR YOUR ROLEX

Thanks to Rolex expertise, your watch will require very little day-to-day care.

You can help preserve its luster by cleaning it occasionally with a microfiber cloth. You can also wash the case and bracelet from time to time using soapy water and a soft brush. After wearing your watch in the sea, it is important to rinse it with fresh water to remove any salt and sand deposits.

Before cleaning your watch, always ensure that the crown is screwed down properly against the case to guarantee waterproofness.

## AFTER-SALES SERVICE

Rolex watch servicing ensures that your timepiece will continue to perform optimally and meet Rolex's stringent requirements in terms of precision, reliability and waterproofness throughout its life.

The timekeeping accuracy of your watch is largely dependent on high-performance lubricants specially developed by Rolex to minimize friction and prevent wear of components. To guarantee continued accuracy and waterproofness, Rolex recommends that you periodically return your watch to an Official Rolex Jeweler or

Service Center for professional servicing, which will always be carried out by a Rolex-approved watchmaker.

During a complete service, the watch is dismantled and all of its components – the case, bracelet and movement – are closely examined.

The movement is entirely disassembled and all the parts are carefully inspected. Those that no longer meet Rolex requirements are systematically replaced by new components. The movement is lubricated on reassembly. The case

and bracelet are re-polished or satin-finished according to their original finish, restoring their shine and luster while removing any marks or scratches.

At the end of the process, your Rolex watch undergoes a series of tests to verify its functions, waterproofness and power reserve, as well as the precision of its movement.

After a complete Rolex service, your watch is covered by a service warranty.

## WORLDWIDE SERVICE NETWORK

The network of Official Rolex Jewelers and Service Centers covers more than 100 countries around the world and draws on the expertise of highly skilled watchmakers, carefully selected and trained by Rolex.

Official Rolex Jewelers can advise you on all the technical aspects of your watch's functions. Whether your bracelet needs sizing or it is time for a complete service, highly qualified Rolex watchmakers are on hand worldwide to meet all of your service needs.

For a list of Official Rolex Jewelers and Service Centers, please visit [rolex.com](https://www.rolex.com).


# ROLEX.COM

We invite you to visit **rolex.com**,  
a privileged place to learn more about  
the functions of your Rolex watch  
and about the quality, know-how and  
fundamental values of the brand.

Welcome to the world of Rolex.

®Trademarks:



ROLEX, , OYSTER, AIR-KING, CERACHROM, CHROMALIGHT, CHRONERGY, COSMOGRAPH, CROWNCLASP, CYCLOPS, DATEJUST, DAY-DATE, DAYTONA, DEEPSEA, EASYLINK, EVEROSE, EXPLORER, EXPLORER II, GMT-MASTER, GMT-MASTER II, JUBILEE, MILGAUSS, OYSTERCLASP, OYSTERFLEX, OYSTERLOCK, OYSTER PERPETUAL, OYSTERSTEEL, PARACHROM, PARAFLEX, PEARLMASTER, PERPETUAL, PRESIDENT, RINGLOCK, ROLESIMUM, ROLESOR, ROLEX GLIDELock, SAROS, SEA-DWELLER, SKY-DWELLER, SUBMARINER, SUNDUST, SYLOXI, TRIPLOCK, TWINLOCK, YACHT-MASTER.  
CELLINI.

Rolex reserves the right to modify the models illustrated in this publication at any time.

© Rolex Watch USA, Inc., Rolex Building, 665 Fifth Avenue, New York, NY 10022  
IMR-EXII-US-21 - 4.2021 - Printed in Switzerland

[rolex.com](https://www.rolex.com)

