

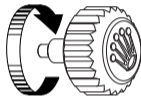
OYSTER PERPETUAL
YACHT-MASTER II



ROLEX

WEARING THE WATCH FOR THE FIRST TIME

Before being worn for the first time, or if it has stopped, a Rolex watch must be wound manually in order to function correctly and precisely. To wind the watch manually, unscrew the winding crown completely, then turn it several times clockwise. (Turning in the other direction has no effect.) A minimum of 25 turns is required for adequate partial winding. The watch will then be wound automatically as long as it is worn on the wrist. Carefully screw the crown back down against the case to ensure waterproofness.



The green seal accompanying your Rolex watch is a symbol of its status as a Superlative Chronometer. This exclusive designation attests to its excellent performance on the wrist. Precision, waterproofness, self-winding capacity and power reserve are tested on the finished watch, in addition to the official certification of its movement. Magnetic resistance, reliability and sustainability are verified earlier in the process during the development and production stages. All the tests are performed in-house and make Rolex a benchmark for excellence in mechanical watches. For further information, please visit [rolex.com](https://www.rolex.com).



THE HEART OF THE YACHT-MASTER II

OYSTER PERPETUAL YACHT-MASTER II	4-5
REGATTA COUNTDOWN	6-7

USING YOUR WATCH

OVERVIEW	8-9
SETTING THE WATCH	10-11
PROGRAMMING AND USING THE COUNTDOWN	12-25
EASYLINK COMFORT EXTENSION LINK	26-27

ROLEX SERVICE

CARING FOR YOUR ROLEX	28-29
AFTER-SALES SERVICE	30-31
WORLDWIDE SERVICE NETWORK	32

ROLEX.COM



YACHT-MASTER II

ROLEX
OYSTER PERPETUAL
SUPERLATIVE CHRONOMETER
OFFICIALLY CERTIFIED

SWISS MADE

OYSTER PERPETUAL YACHT-MASTER II

The Oyster Perpetual Yacht-Master II is a unique regatta chronograph dedicated to yachting enthusiasts. Designed specifically for regatta starting sequences, it features an exclusive function: a programmable countdown with a mechanical memory that can be synchronized on the fly. Moreover, its bidirectional rotatable bezel is fitted with a 60-minute graduated Cerachrom insert, enabling the measurement of time intervals.

Its case, 44 mm in diameter, is a paragon of robustness, and its dial

offers exceptional legibility thanks to the Chromalight hour markers and hands. The sapphire crystal is virtually scratchproof and benefits from an anti-reflective coating.

The Oyster Perpetual Yacht-Master II is equipped with a self-winding mechanical movement entirely manufactured by Rolex.

The Oyster Perpetual Yacht-Master II features an Oyster bracelet with an Oysterlock safety clasp and the Easylink comfort extension link.

REGATTA COUNTDOWN

Thanks to its programmable countdown with a mechanical memory that can be synchronized on the fly, the Oyster Perpetual Yacht-Master II enables skippers to adopt the best possible strategy for the critical start phase of a yacht race.

Simple to programme and to use, this function allows the wearer to see precisely – to the second – how much time remains before the start line can be crossed.

If the countdown function is launched too early or too late at the regatta countdown starting signal, the wearer can synchronize the watch with the official countdown when the preparatory signals are given.

The duration of the countdown, which can be set to any number between 10 minutes and 1 minute and can vary from one race to another depending on the rules, is saved in the mechanical memory. This makes it possible to launch a new countdown without having to reprogramme the watch, for example

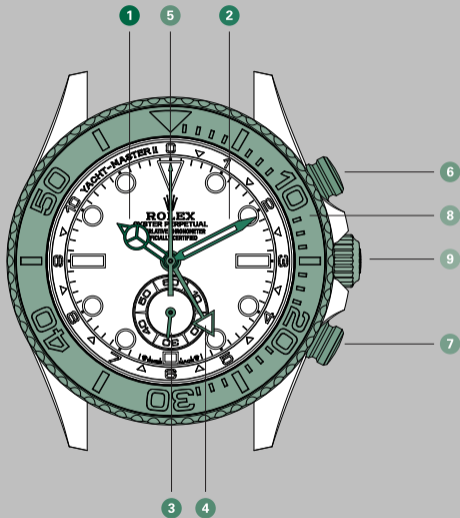
in the next leg or at a subsequent regatta with the same countdown duration.

The countdown minute and seconds hands turn counterclockwise, making the countdown to zero clearly readable.



OVERVIEW

- 1 Hour hand
- 2 Minute hand
- 3 Small seconds hand
- 4 Countdown minute hand
- 5 Countdown seconds hand
- 6 Upper pusher
- 7 Lower pusher
- 8 Bidirectional rotatable bezel with 60-minute graduated Cerachrom insert in ceramic
- 9 Triplock winding crown with triple waterproofness system



SETTING THE WATCH

Screwed-down position (*position 0*)

The crown is completely screwed down against the case. When the crown is in this position, the Oyster Perpetual Yacht-Master II is guaranteed waterproof to a depth of 100 metres (330 feet).

Manual winding (*position 1*)

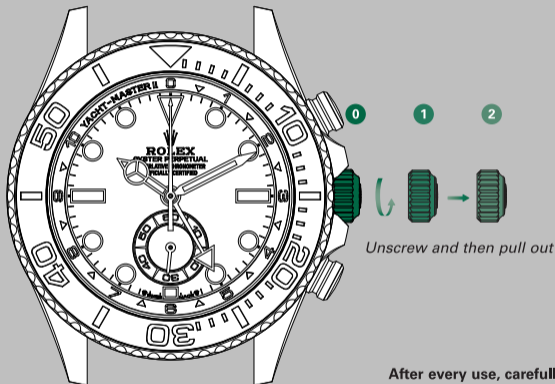
The crown is unscrewed. To wind the watch manually, turn the crown clockwise; turning in the other direction has no effect. When setting the watch for the first time or after the watch has stopped, complete a minimum of 25 turns for partial winding.

Setting the time (*position 2*)

The crown is unscrewed and pulled out to the first notch. The small seconds hand is stopped, allowing you to set the time to the precise second. To set the hour and minute, turn the crown in either direction.

Initial winding and setting

- A. Wind the watch manually (*position 1*).
- B. Set the time (*position 2*).



After every use, carefully screw the crown back down against the case to guarantee the waterproofness. Return the crown to *position 1* and apply light pressure on it while screwing it down clockwise against the case. The crown should never be unscrewed underwater.

PROGRAMMING AND USING THE COUNTDOWN

The official regatta starting procedure unfolds in several stages marked by sound and visual signals. It lasts between 5 and 10 minutes, depending on the type of race.

Opposite: Overview of a 5-minute starting sequence.



START OF THE OFFICIAL
COUNTDOWN

SYNCHRONIZATION,
IF REQUIRED

PREPARATORY
SIGNAL

OFFICIAL
START

Before the race

To programme the countdown, perform the following operations in the order given:

- Ensure that the countdown seconds hand is stationary. If it is not, stop it by pressing the upper pusher, then press the lower pusher to reset the countdown (see pages 24-25);
- Press the lower pusher repeatedly until the minute hand points to the number corresponding to the countdown time (5 minutes in this example). Each press

of the pusher advances the minute hand by one increment.

Once programmed, the countdown duration is mechanically memorized so that when the countdown is reset, it automatically retains the same setting. The countdown can be reprogrammed as often as desired to any duration between 10 minutes and 1 minute.

Go to the next step →



Start of the countdown

A starting gun and the hoisting of a flag signal the start of the official regatta countdown.

- Press the upper pusher to start the countdown. The countdown seconds hand, i.e. the centre seconds hand, starts instantly and indicates the seconds remaining; the triangle-tipped

countdown minute hand progresses along the graduated 10-to-0-minute scale on the flange, counting down the minutes remaining.

Go to the next step →



Synchronizing the countdown function with the official regatta countdown

A preparatory signal is given by firing the gun a second time and hoisting another flag.

If the Oyster Perpetual Yacht-Master II's countdown was launched too early or too late at the first signal, it can be synchronized with the official regatta countdown.

- Press the lower pusher at the preparatory signal to synchronize the watch with the official countdown – the countdown seconds hand is reset on

the fly and runs again instantaneously as soon as the pusher is released. At the same time, the countdown minute hand is automatically synchronized to the nearest minute to compensate for the countdown having been launched too early or too late at the first signal.

Go to the next step →



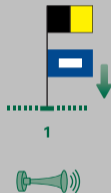
Preparatory signal

A second preparatory signal is given with the blast of a horn and the lowering of the flag hoisted at the first preparatory signal.

- Ensure that the Oyster Perpetual Yacht-Master II's countdown is correctly synchronized with the official regatta countdown. If it is not, synchronize the countdown again (see pages 18-19).

The watch now indicates precisely – to the second – how much time remains before the start line can be crossed.

Go to the next step →



Official start

The starting signal is given by a final sound of the gun and the lowering of the flag hoisted at the start of the official countdown.

At the end of the countdown, the countdown minute hand stops at zero. The countdown seconds hand continues to run.

- Press the upper pusher to stop the countdown seconds hand.

Go to the next step →



Resetting the countdown

To reset the countdown function, perform the following operations in the order given:

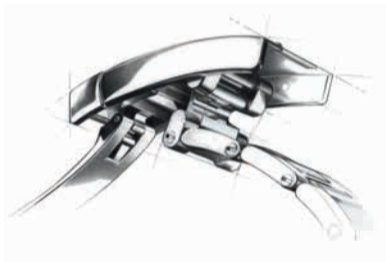
- Press the upper pusher to stop the countdown seconds hand if it was not stopped previously (see pages 22-23);
- Press the lower pusher to reset the countdown function. The hands return to their initial positions for a future countdown: the countdown (centre) seconds hand returns to zero

while the countdown minute hand returns to the number corresponding to the countdown time previously programmed and saved in the mechanical memory (5 minutes in this example).

If the next regatta has a different countdown duration, simply reprogramme the countdown function on the watch (see pages 14-15).

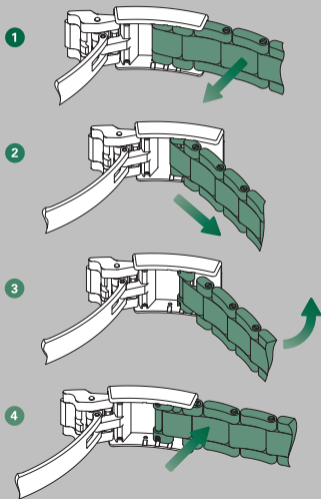


EASYLINK COMFORT EXTENSION LINK

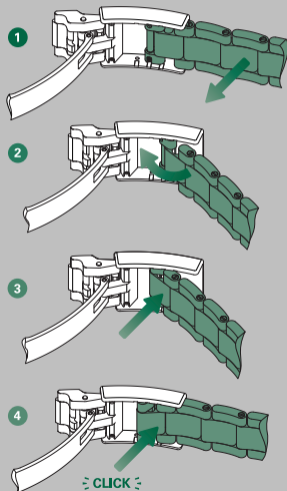


To ensure optimal comfort when wearing your watch, Rolex created the Easylink comfort extension link. This exclusive system comprises a link that is pulled out or folded back on itself to adjust the length of the bracelet by approximately 5 mm, without the need for tools.

Adjusting from the short position to the long position



Adjusting from the long position to the short position



CARING FOR YOUR ROLEX

Thanks to Rolex expertise, your watch will require very little day-to-day care.

You can help preserve its lustre by cleaning it occasionally with a microfibre cloth. You can also wash the case and bracelet from time to time using soapy water and a soft brush. After wearing your watch in the sea, it is important to rinse it with fresh water to remove any salt and sand deposits.

Before cleaning your watch, always ensure that the crown is screwed down properly against the case to guarantee waterproofness.

AFTER-SALES SERVICE

Rolex watch servicing ensures that your timepiece will continue to perform optimally and retain its full lustre throughout its life.

The proper functioning and timekeeping accuracy of your Rolex watch movement is dependent on high-performance lubricants specially developed by the brand. Over time, the properties of all lubricants will degrade, which can affect a movement's precision.

Additionally, to verify the waterproofness of your watch, it is important to carry out stringent technical checks.

Rolex therefore recommends that you periodically return your watch to one of its Official Rolex Retailers or Service Centres for complete servicing, which is always performed by a Rolex-approved watchmaker.

During a complete service, the watch is dismantled and all of its components – the case, bracelet and movement – are closely examined.

The movement is entirely disassembled and all the parts are carefully inspected. Those that no longer meet Rolex requirements are systematically replaced by new components. The movement is lubricated on reassembly. The case and bracelet can, on request, be re-polished or satin-finished according to their original aesthetics, to restore their shine and lustre.

At the end of the process, your Rolex watch undergoes a series of tests to verify its functions, waterproofness and power reserve, as well as the precision of its movement.

After a complete Rolex service, your watch is covered by a service guarantee.

WORLDWIDE SERVICE NETWORK

The network of Official Rolex Retailers and Service Centres covers more than 100 countries around the world and draws on the expertise of highly skilled watchmakers, carefully selected and trained by Rolex.

Official Rolex Retailers can advise you on all the technical aspects of your watch's functions. Whether your bracelet needs sizing or it is time for a complete service, highly qualified Rolex watchmakers are on hand worldwide to meet all of your service needs.

For a list of Official Rolex Retailers and Service Centres, please visit [rolex.com](https://www.rolex.com).

ROLEX.COM

We invite you to visit **rolex.com**,
a privileged place to learn more about
Rolex watches and the quality, know-how
and fundamental values of the brand.

Welcome to the world of Rolex.

Rolex reserves the right to modify the models illustrated in this publication at any time.

© Rolex SA, 3-5-7, rue François-Dussaud, 1211 Geneva 26, Switzerland
IMR-YMII-EN-26 - 4.2026

[rolex.com](https://www.rolex.com)

